



THE REPUBLIC OF UGANDA
MINISTRY OF HEALTH

COVID-19 DAILY SITUATION REPORT

1.0 HIGHLIGHTS

- ❖ Five hundred twenty-six (526) new COVID-19 confirmed cases reported in the last 24 hours bringing the cumulative total to **31,910** from **135/136 districts**.
- ❖ No COVID-19 deaths have been registered today. Cumulative deaths stand at **238** (Case Fatality Rate: **0.7%**).
- ❖ Ninety five percent of confirmed cases **95%** (30,456/31,910) are **locally transmitted** while **5%** (1,454/31,910) are **imported cases**.
- ❖ A total of 433 **confirmed cases** (Ugandans: 406; Non-Ugandans: 27) are currently admitted across **18 health facilities** and **6 Non-Traditional Isolation Facilities**.
- ❖ National bed capacity currently stands at **3,486** beds with 433 cases on active admission, giving a bed occupancy rate of **12.4%**.
- ❖ A cumulative total of **11,409 cases** have recovered and been discharged (**10,421** cases under hospital management and **988** for Home Based Care)
- ❖ A total of **4,086 laboratory samples** were tested today bringing it to a cumulative total of **718,318 samples** tested. Positivity rate today stands at 12.9% compared to 9.7% of the previous day.



Summary of COVID-19 outbreak in Uganda

Summary statistics as of 21st December 2020	
Total Confirmed Cases	31,910
New deaths	00
Cumulative deaths (laboratory confirmed)	238
Health facilities	234
Community	04
Cumulative deaths (non-laboratory confirmed-probable)	74
Confirmed cases on admission	433
Ugandans	406
Non-Ugandans	27
Cumulative number of recoveries (Facility management)	10,421
Ugandans	10,021
Non-Ugandans	400
Runaways from isolation (Cumulative)	79 (59 prison)
Cumulative contacts listed	48,750
Contacts that have completed 14 days	47,199
Contacts still under follow up	1,551
Contacts followed up today	275(17%)
Contacts followed up today who became symptomatic	00
Contacts lost to follow up	00
Specimens collected and sent to the lab today	4,086
PoE	85
Travellers (intending travel out country)	1,363
Contacts and alerts	2,602
Health workers	36
Cumulative specimens collected	718,318
Number of cases with positive results today	526
Ground crossing POE	01
Travellers (intending travel out country)	90
Contacts	122
Alerts	308
Returnees via EIA	00
Health workers	05



2.0 EPIDEMIOLOGY

Today, 526 new cases have been registered from 35 districts with Kampala still reporting the highest number of cases followed by Wakiso, Tororo and Kalungu as shown below. Alerts account for the highest number of cases at 308 cases (58%), followed by Contacts at 122 cases (23%) and Travellers (persons testing for travel purposes) at 90 cases (17%). To-date, only one district (Otuke) has not reported a COVID-19 case.

2.1 New COVID-19 Cases confirmed today by district and type

District	Alert	Contact	Health worker	Truck driver	Traveller	Total
Kampala	154	54	3		83	294
Wakiso	57	11			5	73
Tororo	10	11		1		22
Kalungu	9	3				12
Masaka	5	4				9
Lyantonde	5	4				9
Buikwe	7	1				8
Busia	6				2	8
Kabarole	2	6				8
Jinja		7				7
Bushenyi		6				6
Kiboga	6					6
Mbale	4	2				6
Kasese	2	3				5
Mityana	5					5
Mpigi	5					5
Mukono	3	2				5

District	Alert	Contact	Health worker	Truck driver	Traveller	Total
Ntungamo	2	3				5
Mbarara	4					4
Ibanda	4					4
Kalaki	3					3
Rubanda	3					3
Buvuma		2				2
Soroti	1		1			2
Sheema	2					2
Butambala	1	1				2
Mubende	2					2
Amuru	1					1
Gulu	1					1
Koboko	1					1
Kyotera			1			1
Moyo		1				1
Nakaseke	1					1
Kamuli		1				1
Kamwenge	1					1

Figure 1: New COVID-19 Confirmed cases



2.2 National trend of confirmed cases by date of laboratory confirmation

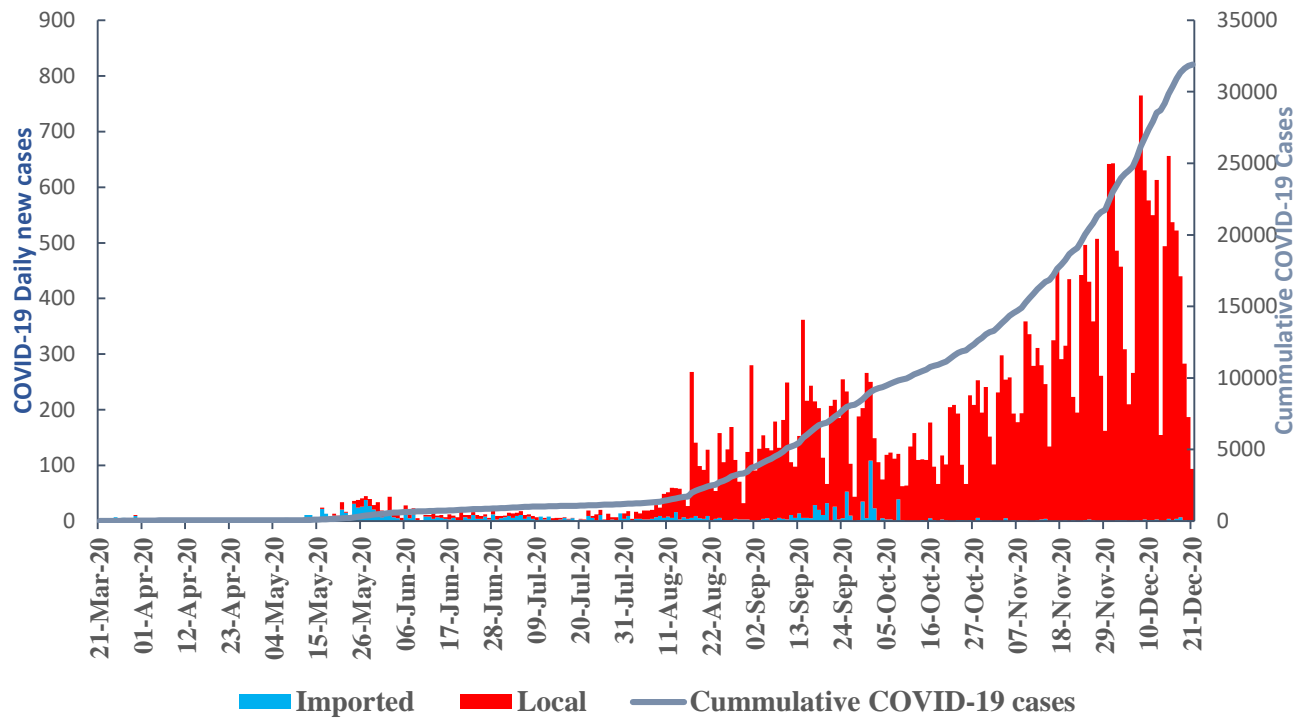


Figure 2: Confirmed cases by date of sample collection

2.3 COVID-19 Laboratory testing outcome

Positivity rate today stands at 12.9% with 526 new confirmed cases out of the 4086 samples tested which is an increase in comparison to the previous day. This is above the average 7% positivity since August 2020.

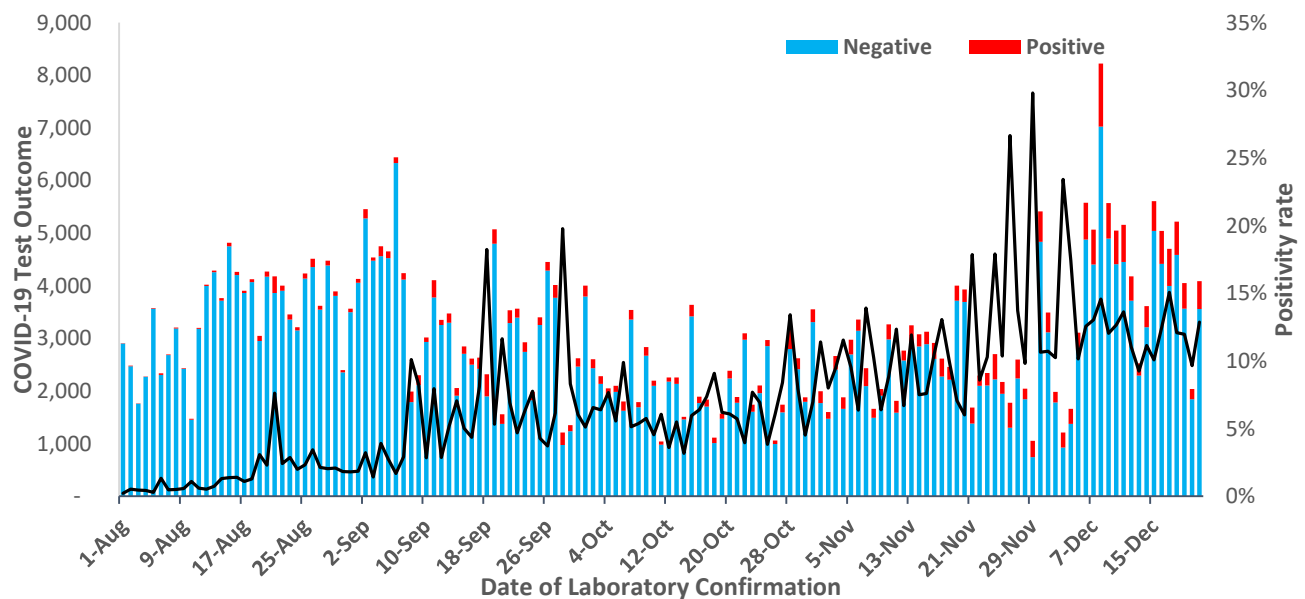


Figure 3: COVID-19 Testing outcomes



2.4 Distribution of COVID-19 Cases by type

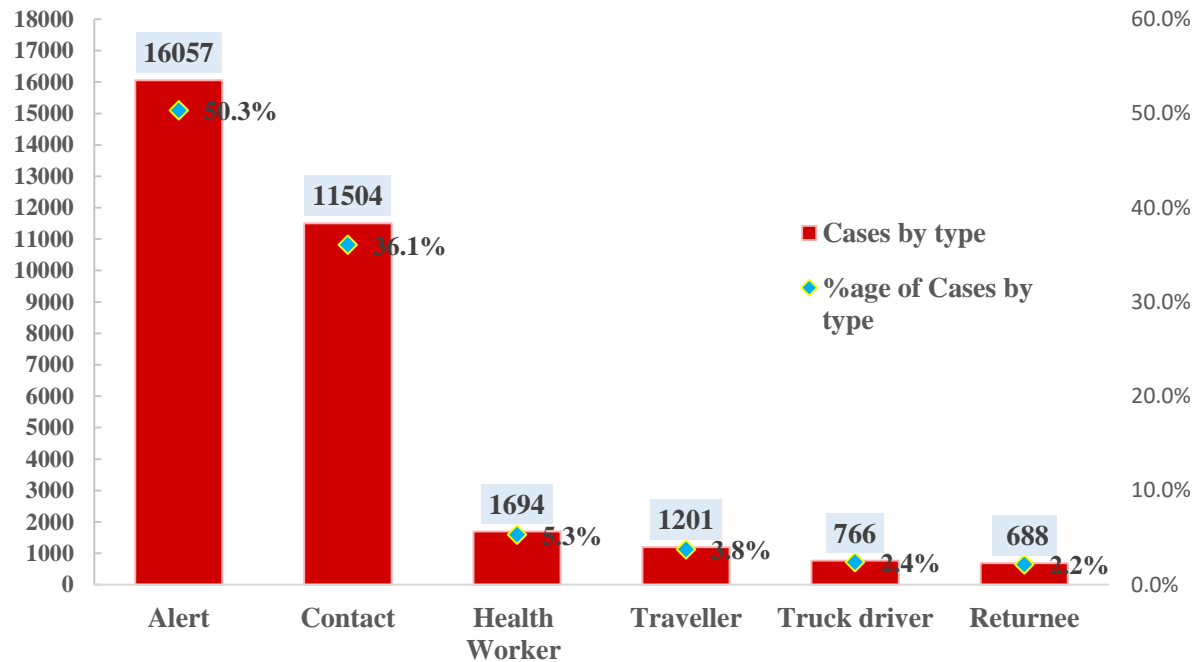


Figure 4: COVID-19 cases reported to date by type

2.5 Trends of contacts and alert cases registered since August 2020

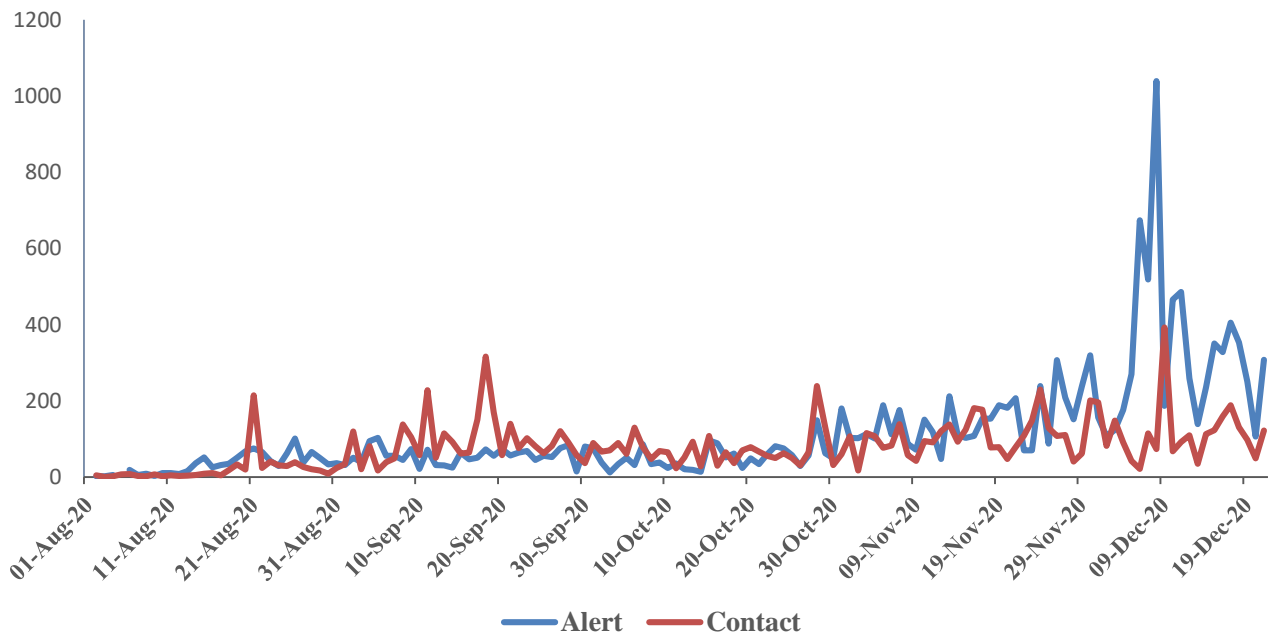


Figure 5: Daily trends in new contacts and alert cases confirmed by date of laboratory confirmation



3.0 PUBLIC HEALTH ACTIONS

COORDINATION

- Incident Management Team (IMT) meeting chaired by the Incident Commander continues to meet daily.

SURVEILLANCE

- Active case finding focusing on most affected areas.
- Strengthening alert management system and daily reporting from all districts and health facilities.
- Continued investigation of alerts and suspected cases, especially new clusters and newly affected areas.

CASE MANAGEMENT

- There are **433** confirmed cases on active facility admission across the country. Below is summary by treatment site.

Isolation Facility Type	Isolation Facility Name	Active Facility Admissions	Cumulative Discharges	Total Bed Capacity	% Bed Occupancy
Hospital COVID-19 Treatment Unit	Mulago NRH	153	2354	356	43%
	Naguru Hospital	9	92	12	75%
	Entebbe Hospital	91	1072	141	65%
	Jinja RRH	5	251	63	8%
	Mbale RRH	16	421	50	32%
	Moroto RRH	2	222	100	2%
	Soroti RRH	17	455	90	19%
	Lira RRH	1	319	51	2%
	Gulu RRH	4	642	12	33%
	Arua RRH	3	313	56	5%
	Hoima RRH	2	126	49	4%
	Mubende RRH	7	125	25	28%
	Fort Portal RRH	7	58	26	27%
	Kabale RRH	19	452	64	30%



Isolation Facility Type	Isolation Facility Name	Active Facility Admissions	Cumulative Discharges	Total Bed Capacity	% Bed Occupancy
	Mbarara RRH	20	200	30	67%
	Masaka RRH	8	180	41	20%
	Bombo Military Hospital	6	198	60	10%
	Adjumani General Hospital	0	57	20	0%
Non Traditional Isolation Facility	Namboole	53	1785	800	7%
	Kyangwali	0	12	40	0%
	Achwa power	0	208	200	0%
	Gulu Prison	9	323	400	2%
	Moroto Prison	0	115	200	0%
	Jinja Prison	1	441	600	0%

RISK COMMUNICATION AND SOCIAL MOBILIZATION

- The team continues to release daily press briefs to update the general public on the COVID-19 outbreak.

LOGISTICS

- With funding support from Global Fund, process is on-going to;
 - Procure COVID19 Diagnostics with specific focus to scale up testing with Rapid Diagnostic Tests (RDTs).



- Procure Personal Protective Equipment (PPEs) for Health Workers supporting COVID-19 response and continuation of essential service i.e. HIV, Tuberculosis and Malaria as shown below.

Item	QTY (PCS)	Total Cost
Mask, Surgical, Type IIR fluid resistant, s.u./disp. - Pack of 50	114,714	2,466,346
Respirator, Surgical, High-filt, FFP2/N95, no-valve, none ster - Pack of 20	45,652.17	2,100,000
Gloves, Examination, non-ster, s.u./disp, pwd free, nitrile, size M - Pack of 100	200,000.00	2,198,440
Gloves, Examination, non-ster, s.u./disp, pwd free, nitrile, size L - Pack of 10	91,115.52	1,001,560
Coveralls Protection CatIII, 6b,L	32,734.00	266,828
Apron, 100Pcs	20,338.20	427,102
Gown, fluid-resistant, disposable, with elastic wrists	90,000.00	292,500
Shoe Covers	90,000.00	111,600
Hood water proof (to be used with gowns) [1]	90,000.00	453,600
Total product costs		9,317,976
PSM costs		2,191,076
TOTAL		11,509,052

ICT AND INNOVATIONS

- Digitise tools using DHIS2 platform for school-based surveillance and monitoring.
- Digitization of tools for effective surveillance and monitoring of patients under Home Based Care.
- Integration of COVID-19 Routine Aggregate and Case Reporting into the national system.
- Connection of COVID-19 Treatment Units (C19TU) and Point of Entry (PoEs) to the National Backbone Infrastructure (NBI).
- Incorporation of automated email notification of positive results to Case Management, Surveillance and Emergency Medical Services.
- Roll out of electronic laboratory request to reduce burden of data entry and improve consistency of data end to end.
- The Uganda COVID-19 dashboard can be accessed at <https://covid19.gou.go.ug/>



4.0 CHALLENGES

- Delay in dispatch of results to districts; electronic laboratory request application to be rolled out to reduce data entry workload and thus turnaround time.
- Resistance from community to be evacuated for confirmed cases, denial of results and non-compliance with directives and guidelines especially within Kampala.
- Inadequate resources/funding to facilitate smooth operation of the different COVID-19 response activities.

Given the fast-evolving nature of this epidemic, errors and omissions are inevitable. The Incident Management Team welcomes feedback and any information that could help rectify this. Send any comments and feedback to:
E-mail: mohugpheoc@gmail.com