



THE REPUBLIC OF UGANDA
MINISTRY OF HEALTH

COVID-19 DAILY SITUATION REPORT

1.0 HIGHLIGHTS

- ❖ **Two hundred three (203) new COVID-19 confirmed cases** reported in the **last 24 hours** bringing the cumulative total to **33,563** from **135/136 districts**.
- ❖ **No COVID-19 death** has been registered today. Cumulative deaths stand at **245** (Case Fatality Rate: **0.73%**).
- ❖ Ninety six percent of confirmed cases **96%** (32,100/33,563) are **locally transmitted** while **4%** (1,463/33,563) are **imported cases**.
- ❖ A total of 313 **confirmed cases** (Ugandans: 305; Non-Ugandans: 08) are currently admitted across **18 health facilities** and **6 Non-Traditional Isolation Facilities**.
- ❖ National bed capacity currently stands at **3,486** beds with 313 cases on active admission, giving a bed occupancy rate of **8.9%**.
- ❖ A cumulative total of **11,746 cases** have recovered and been discharged (**10,695** cases under hospital management and **1,051** for Home Based Care)
- ❖ A total of **2,136 laboratory samples** were tested today bringing it to a cumulative total of **733,052 samples** tested. Positivity rate today stands at 9.5% compared to 14.9% of the previous day.



Summary of COVID-19 outbreak in Uganda

Summary statistics as of 25th December 2020	
Total Confirmed Cases	33,563
New deaths	00
Cumulative deaths (laboratory confirmed)	245
Health facilities	241
Community	04
Cumulative deaths (non-laboratory confirmed-probable)	180
Confirmed cases on admission	313
Ugandans	305
Non-Ugandans	08
Cumulative number of recoveries (Facility management)	10,695
Ugandans	10,275
Non-Ugandans	420
Runaways from isolation (Cumulative)	79 (59 prison)
Cumulative contacts listed	48,750
Contacts that have completed 14 days	47,199
Contacts still under follow up	1,551
Contacts followed up today	275(17%)
Contacts followed up today who became symptomatic	00
Contacts lost to follow up	00
Specimens collected and sent to the lab today	2,136
PoE	29
Travellers (intending travel out country)	820
Contacts and alerts	1,277
Health workers	10
Cumulative specimens collected	733,052
Number of cases with positive results today	203
Ground crossing POE	02
Travellers (intending travel out country)	31
Contacts	38
Alerts	131
Returnees via EIA	00
Health workers	01



2.0 EPIDEMIOLOGY

A total of 203 new cases have been registered today from 14 districts with Kampala still reporting the highest number of cases followed by Wakiso and Luwero as shown below. Alerts continue to account for the highest number of cases registered on a daily with 131 cases (64%) reported today, followed by Contacts at 38 cases (19%) and Travellers (persons testing for travel purposes) at 31 cases (15%). To-date, only one district (Otuke) has not reported a COVID-19 case.

2.1 New COVID-19 Cases confirmed today by district and type

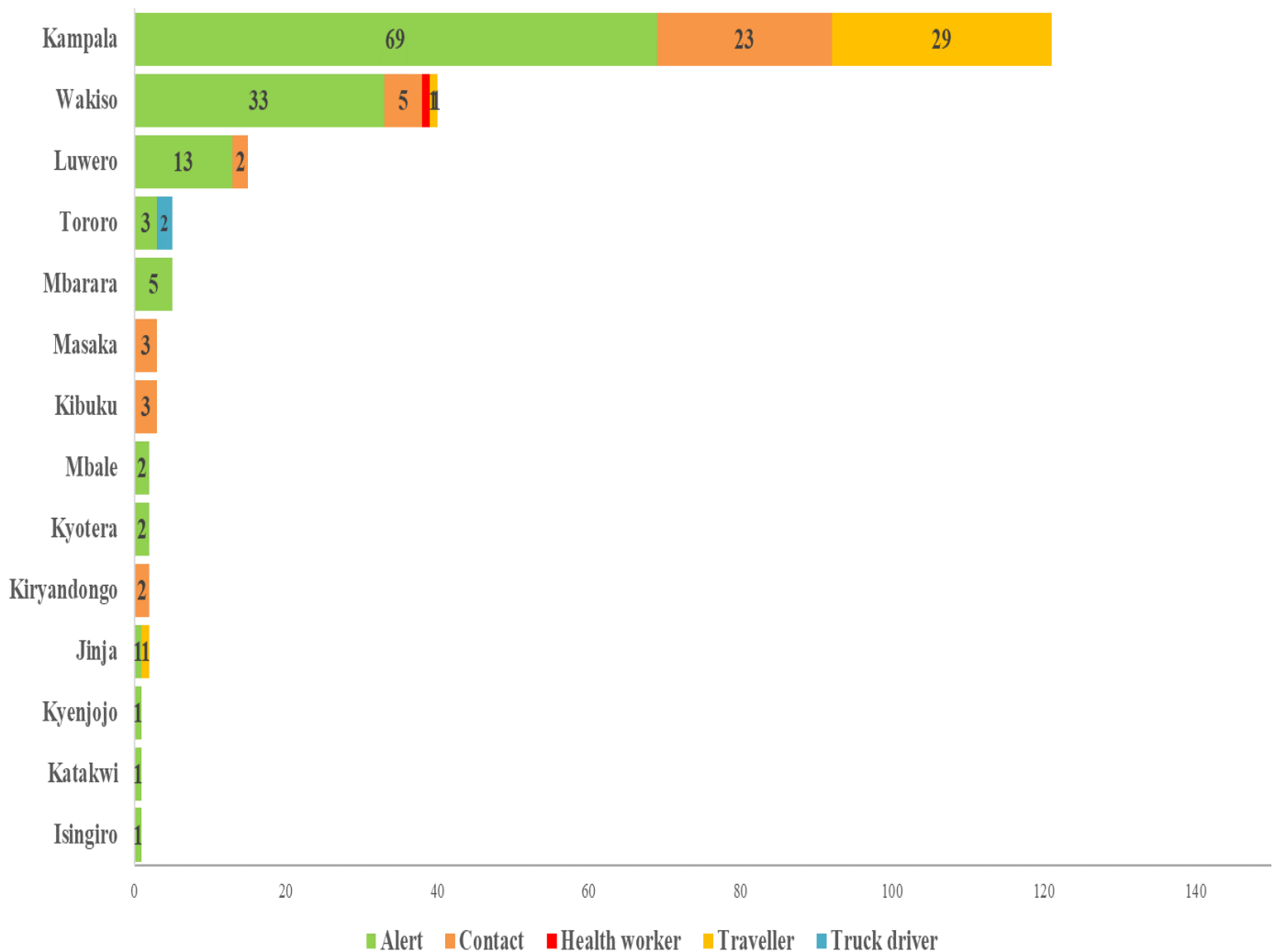


Figure 1: New COVID-19 Confirmed cases



2.2 National trend of confirmed cases by date of laboratory confirmation

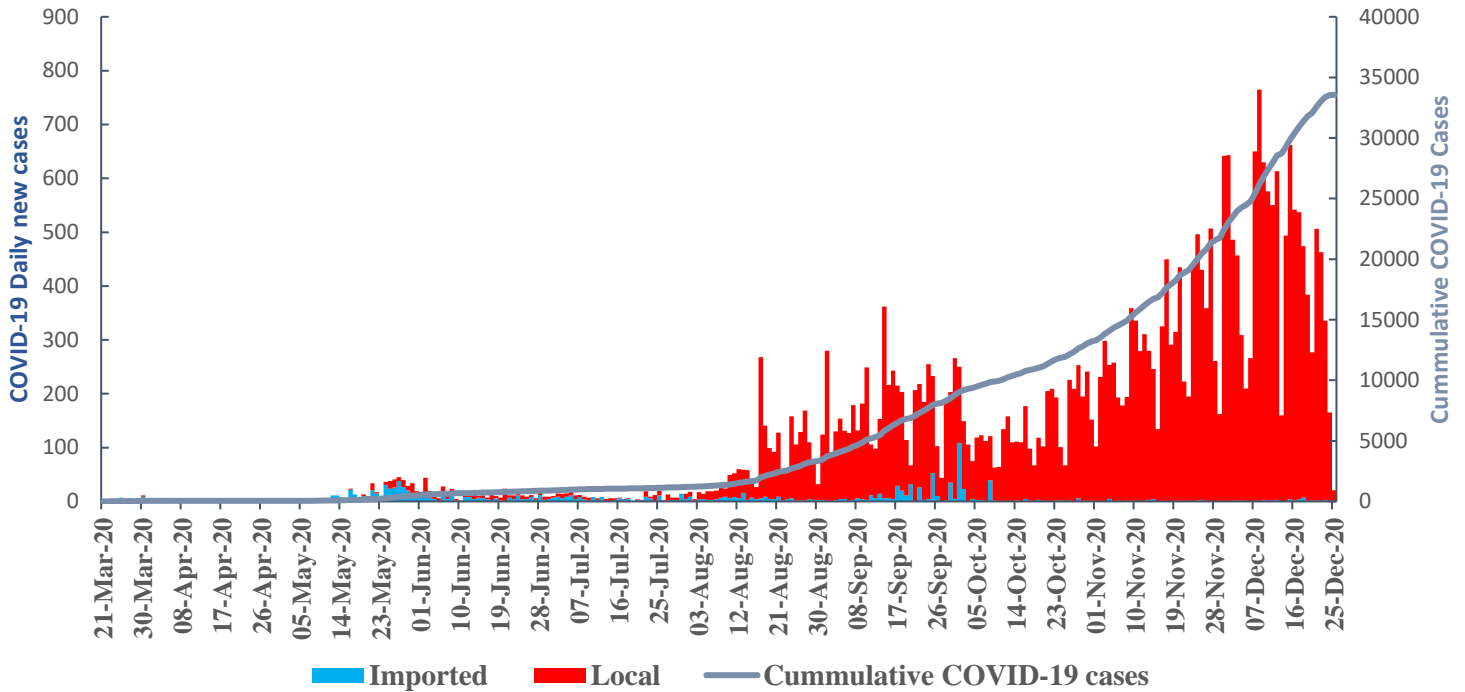


Figure 2: Confirmed cases by date of sample collection

2.3 COVID-19 Laboratory testing outcome

Positivity rate today stands at 9.5% with 203 new confirmed cases out of the 2,136 samples tested which is a decrease in comparison to the previous days (14.9%). However, this is still above the average 7% positivity since August 2020.

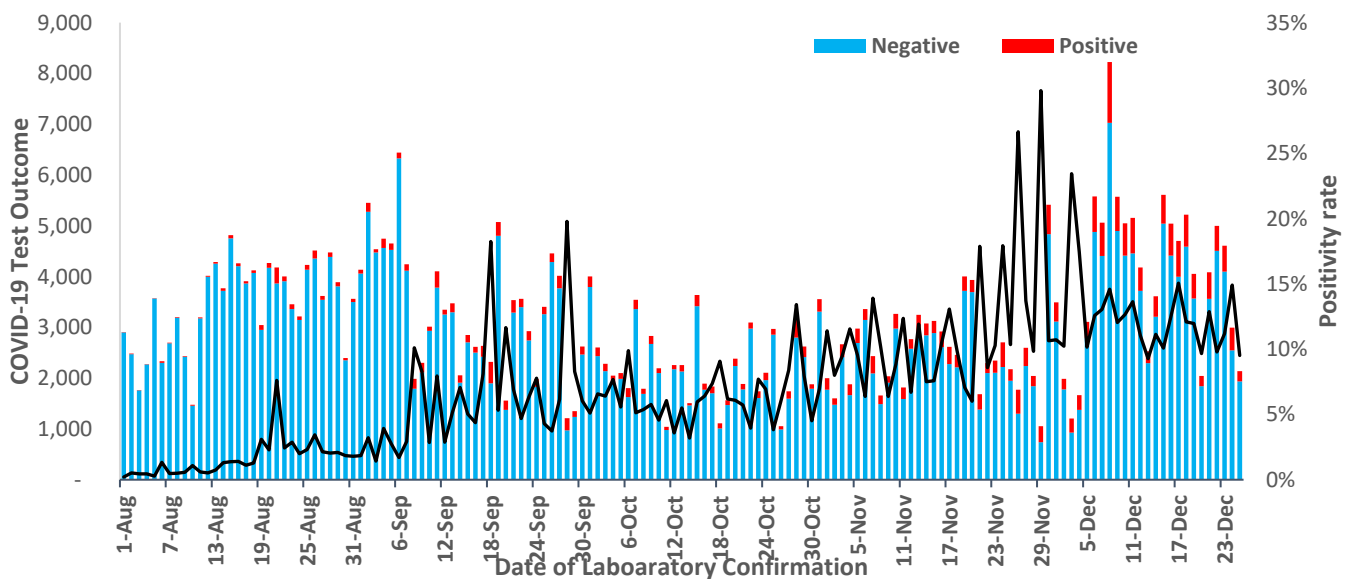


Figure 3: COVID-19 Testing outcomes



2.4 Distribution of COVID-19 Cases by type

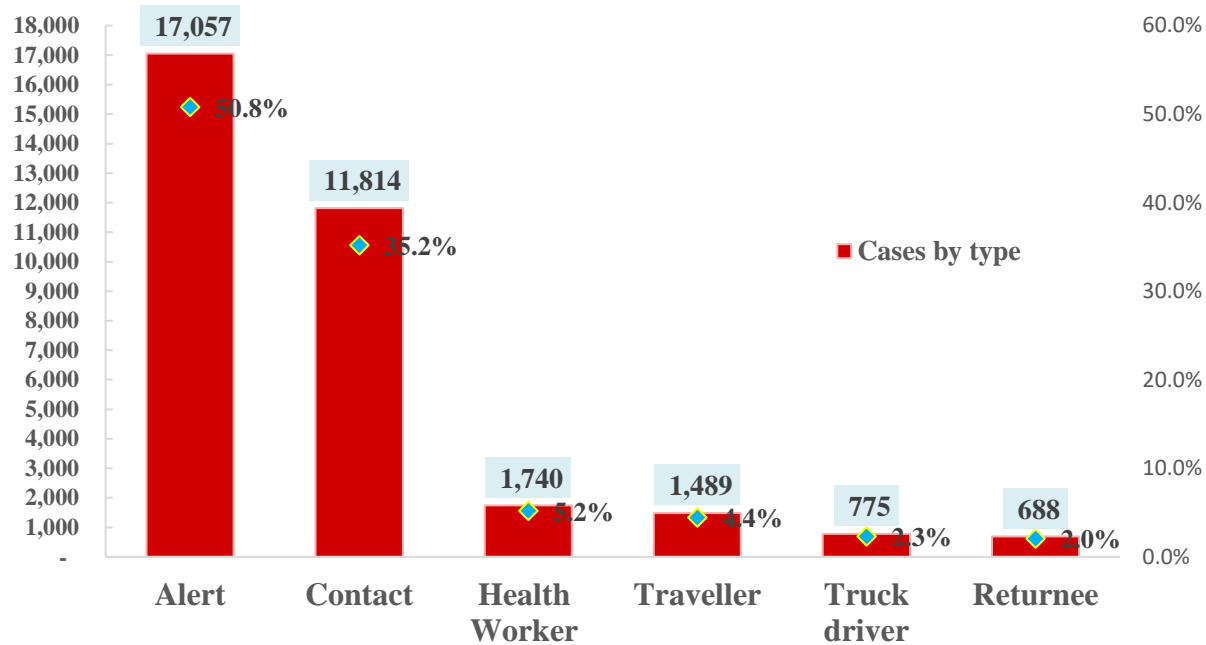


Figure 4: COVID-19 cases reported to-date by type

2.5 Trends of contacts and alert cases registered since August 2020

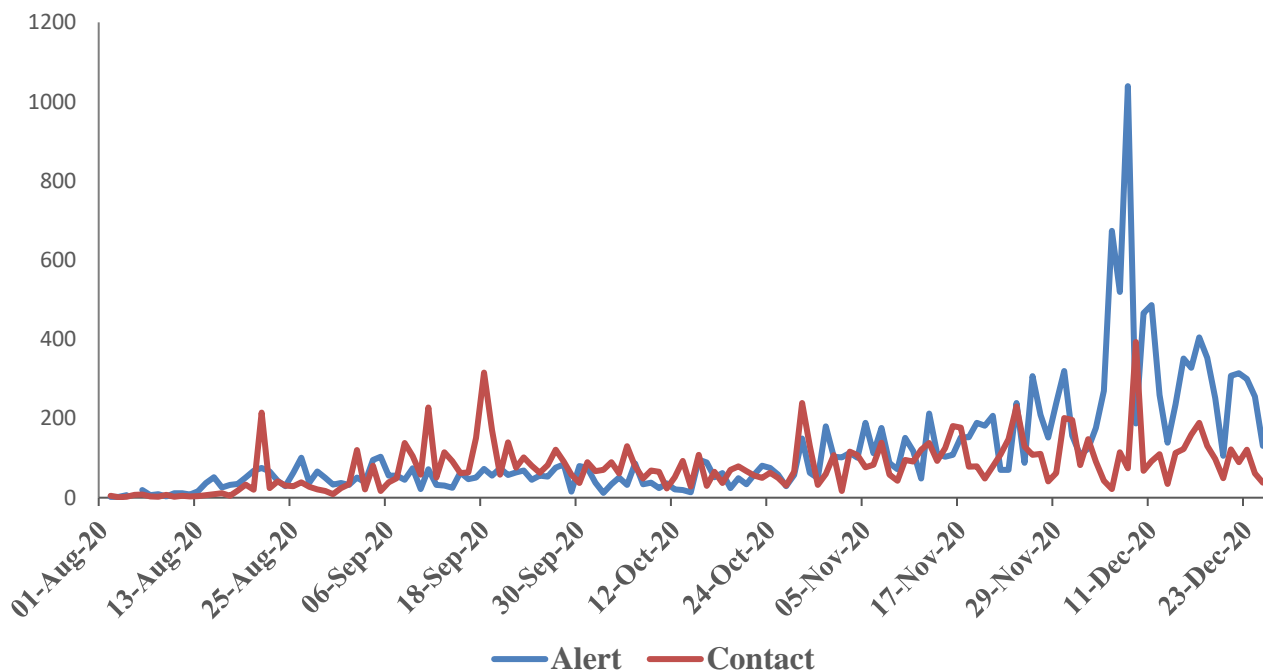
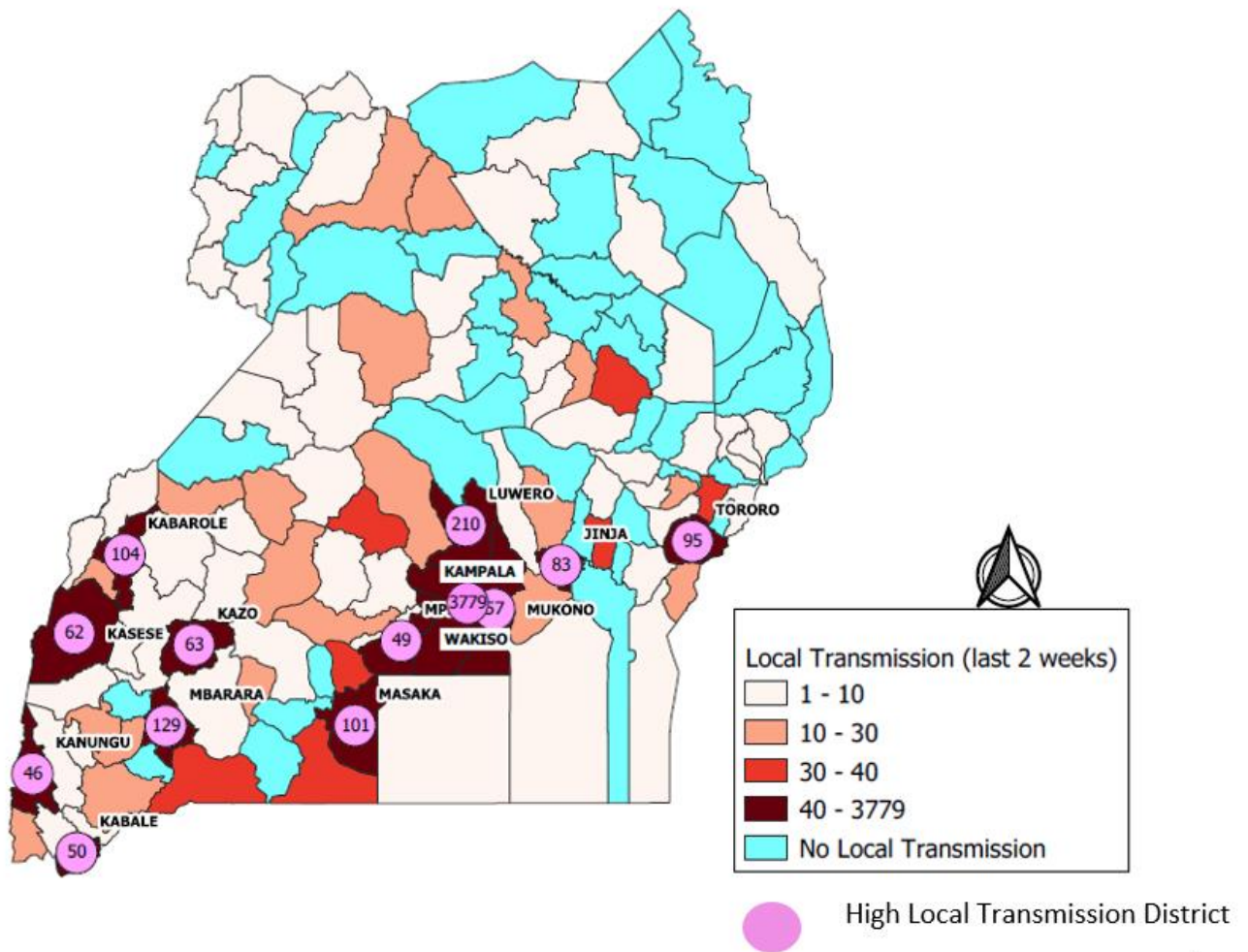


Figure 5: Daily trends in new contacts and alert cases confirmed by date of laboratory confirmation



2.6 Map showing districts reporting local transmission in the last 14 days: 12th-14th Dec 2020 (n=6,457)





2.7 Categorisation of confirmed cases on active admission by severity of disease (n=313)

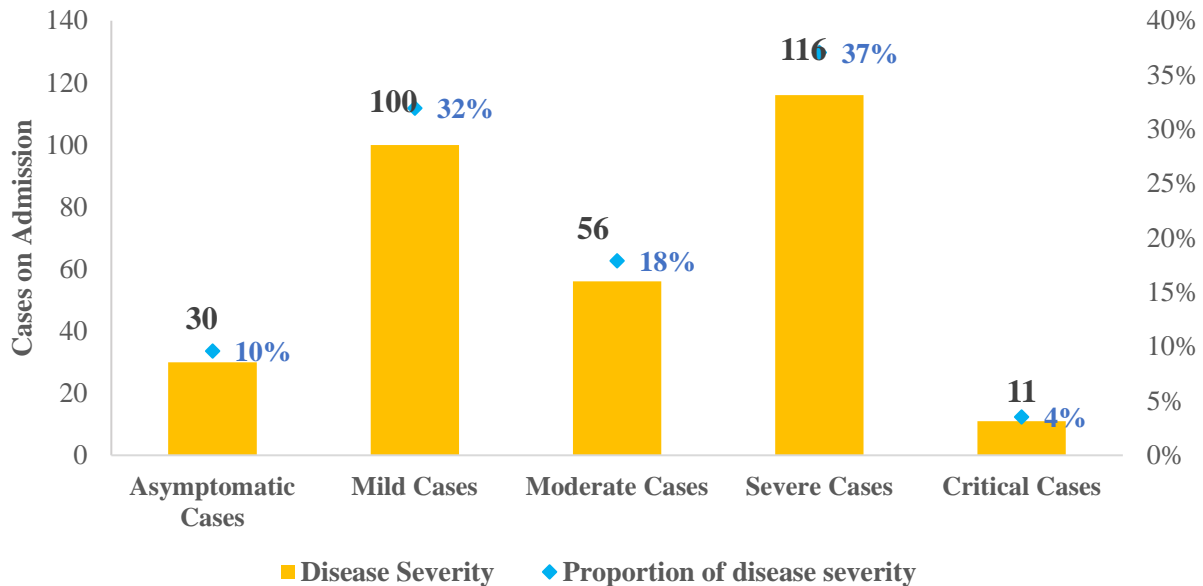


Figure 7: Active cases on admission by disease severity

3.0 PUBLIC HEALTH ACTIONS

COORDINATION

- Incident Management Team (IMT) meeting chaired by the Incident Commander continues to meet daily.

SURVEILLANCE

- Active case finding focusing on most affected areas.
- Strengthening alert management system and daily reporting from all districts and health facilities.
- Continued investigation of alerts and suspected cases, especially new clusters and newly affected areas.

CASE MANAGEMENT

- There are **313** confirmed cases on active facility admission across the country. Below is summary by treatment site.



Isolation Facility Type	Isolation Facility Name	Active Facility Admissions	Cumulative Discharges	Total Bed Capacity	% Bed Occupancy
Hospital COVID-19 Treatment Unit	Mulago NRH	119	2449	356	33%
	Naguru Hospital	9	92	12	75%
	Entebbe Hospital	61	1137	141	43%
	Jinja RRH	5	251	63	8%
	Mbale RRH	5	432	50	10%
	Moroto RRH	4	230	100	4%
	Soroti RRH	8	462	90	9%
	Lira RRH	4	316	51	8%
	Gulu RRH	4	642	12	33%
	Arua RRH	3	313	56	5%
	Hoima RRH	0	128	49	0%
	Mubende RRH	5	128	25	20%
	Fort Portal RRH	5	63	26	19%
	Kabale RRH	11	470	64	17%
	Mbarara RRH	20	203	30	67%
	Masaka RRH	8	188	41	20%
	Bombo Military Hospital	8	201	60	13%
	Adjumani General Hospital	0	57	20	0%
Non Traditional Isolation Facility	Namboole	18	1834	800	2%
	Kyangwali	0	12	40	0%
	Achwa power	0	208	200	0%
	Gulu Prison	9	323	400	2%
	Moroto Prison	0	115	200	0%
	Jinja Prison	7	441	600	1%

RISK COMMUNICATION AND SOCIAL MOBILIZATION

- The team continues to release daily press briefs to update the general public on the COVID-19 outbreak.



LOGISTICS

- With funding support from Global Fund, process is on-going to;
 - Procure COVID19 Diagnostics with specific focus to scale up testing with Rapid Diagnostic Tests (RDTs).
 - Procure Personal Protective Equipment (PPEs) for Health Workers supporting COVID-19 response and continuation of essential service i.e. HIV, Tuberculosis and Malaria as shown below.

Item	QTY (PCS)	Total Cost
Mask, Surgical, Type IIR fluid resistant, s.u./disp. - Pack of 50	114,714	2,466,346
Respirator, Surgical, High-filt, FFP2/N95, no-valve, none ster - Pack of 20	45,652.17	2,100,000
Gloves, Examination, non-ster, s.u./disp, pwd free, nitrile, size M - Pack of 100	200,000.00	2,198,440
Gloves, Examination, non-ster, s.u./disp, pwd free, nitrile, size L - Pack of 10	91,115.52	1,001,560
Coveralls Protection CatIII, 6b,L	32,734.00	266,828
Apron, 100Pcs	20,338.20	427,102
Gown, fluid-resistant, disposable, with elastic wrists	90,000.00	292,500
Shoe Covers	90,000.00	111,600
Hood water proof (to be used with gowns) [1]	90,000.00	453,600
Total product costs		9,317,976
PSM costs		2,191,076
TOTAL		11,509,052

ICT AND INNOVATIONS

- Digitise tools using DHIS2 platform for school-based surveillance and monitoring.
- Digitization of tools for effective surveillance and monitoring of patients under Home Based Care.
- Integration of COVID-19 Routine Aggregate and Case Reporting into the national system.
- Connection of COVID-19 Treatment Units (C19TU) and Point of Entry (PoEs) to the National Back Bone Infrastructure (NBI).
- Incorporation of automated email notification of positive results to Case Management, Surveillance and Emergency Medical Services.



- Roll out of electronic laboratory request to reduce burden of data entry and improve consistency of data end to end.
- The Uganda COVID-19 dashboard can be accessed at <https://covid19.gou.go.ug/>

4.0 CHALLENGES

- Delay in dispatch of results to districts; electronic laboratory request application to be rolled out to reduce data entry workload and thus turnaround time.
- Resistance from community to be evacuated for confirmed cases, denial of results and non-compliance with directives and guidelines especially within Kampala.
- Inadequate resources/funding to facilitate smooth operation of the different COVID-19 response activities.

Given the fast-evolving nature of this epidemic, errors and omissions are inevitable. The Incident Management Team welcomes feedback and any information that could help rectify this. Send any comments and feedback to:
E-mail: mohugpheoc@gmail.com